





In 1969, Mesa, then known as Mesa Mesken Sanayii, began its journey to add value to lives and become a trailblazer in the industry. Through bold and innovative steps, Mesa continues to impress hundreds of thousands of satisfied customers who have placed trust in the Mesa brand in almost every single area in which it operates. Creating designs that take into account a holistic approach towards housing construction, Mesa has introduced the “Branded Housing” concept, setting new standards and changing perceptions of housing estates.

Mesa is involved in every stage of production from infrastructure and landscaping in the initial design stage to its delivery and after delivery services. To date, Mesa has built and settled more than 100,000 houses on 12,000,000 square meters. All Mesa products are hallmarks of the company’s unique quality-based vision. With a workforce of nearly 4,500 qualified employees, strengthening the core of the company, Mesa affirms its stature as a strong corporate entity entrusted by all.

Mesa is continuously expanding into new areas of investment and has become a trusted “Life Brand” that goes beyond its original positioning as a provider of branded housing. By combining enterprises, as both a contractor and as a producer, Mesa continues its outstanding award-recognized performance. In addition to providing superior housing complexes with solid infrastructure, technical and social facility centers and finely executed landscape plans, we are also building business centers, shopping malls, schools, hospitals, tourism and sports facilities, public parks, health and cultural centers, office buildings, industrial facilities and lots of other similar buildings both locally and abroad. While Mesa organizations undertake design, planning and construction work to ensure the safe progress of building projects, the company also manufactures building materials for the construction industry such as steel formwork, steel mesh, woodwork, precast materials and in particular, tunnel formwork; steaming ahead in global leadership and ensuring the exceptional quality of workmanship.

Mesa is proud to give an “Unconditional Customer Satisfaction Guarantee” for every building, and operates a “Customer Service Department” that brings a new dimension to quality service through prompt interventions in case of unforeseen complaints that may occur. With the innovations it has brought to the housing sector with its “Steel Formwork Technology”, “Customer Service Department” and “Housing Estate Maintenance Service”, which are all “firsts” in the industry, Mesa is stepping into other sectors with increasing confidence, taking pride in defining the next 50 years on the basis of its strong and well-recognized principles and values.



MESA ÇUBUKLU 28

Everything has been designed to make life even more enjoyable for you and your loved ones.

Admired for its unique concept, Mesa Çubuklu 28 comes to life with MESA privilege, which adds value to life with every project.

An architectural rendering of a modern residential complex. The buildings feature a facade of vertical wooden slats and large glass windows. They are situated on a hillside with lush greenery and trees. The sky is a mix of blue and orange, suggesting a sunset or sunrise. The overall atmosphere is serene and modern.

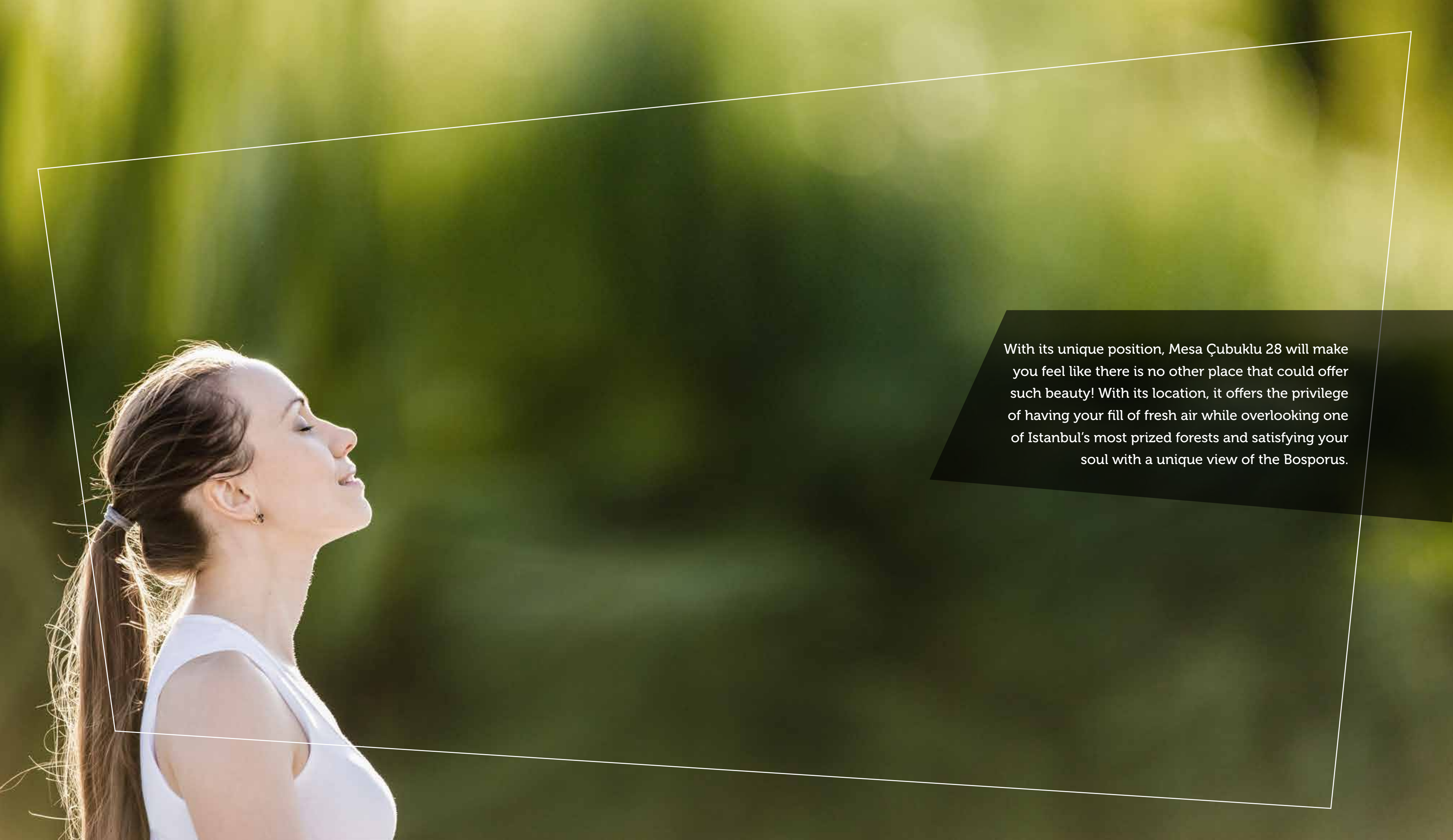
OVERLOOKING THE FOREST & THE BOSPORUS

Unwinding with a cup of foaming Turkish coffee is the perfect way for many to take a break from the rush of life. But this experience wouldn't be complete without a warm and friendly conversation.

Imagine sipping a perfect cup of coffee with your loved ones while enjoying views of the forest and the Bosphorus.

There is no other spot in Istanbul that could offer such a perfect break from life!





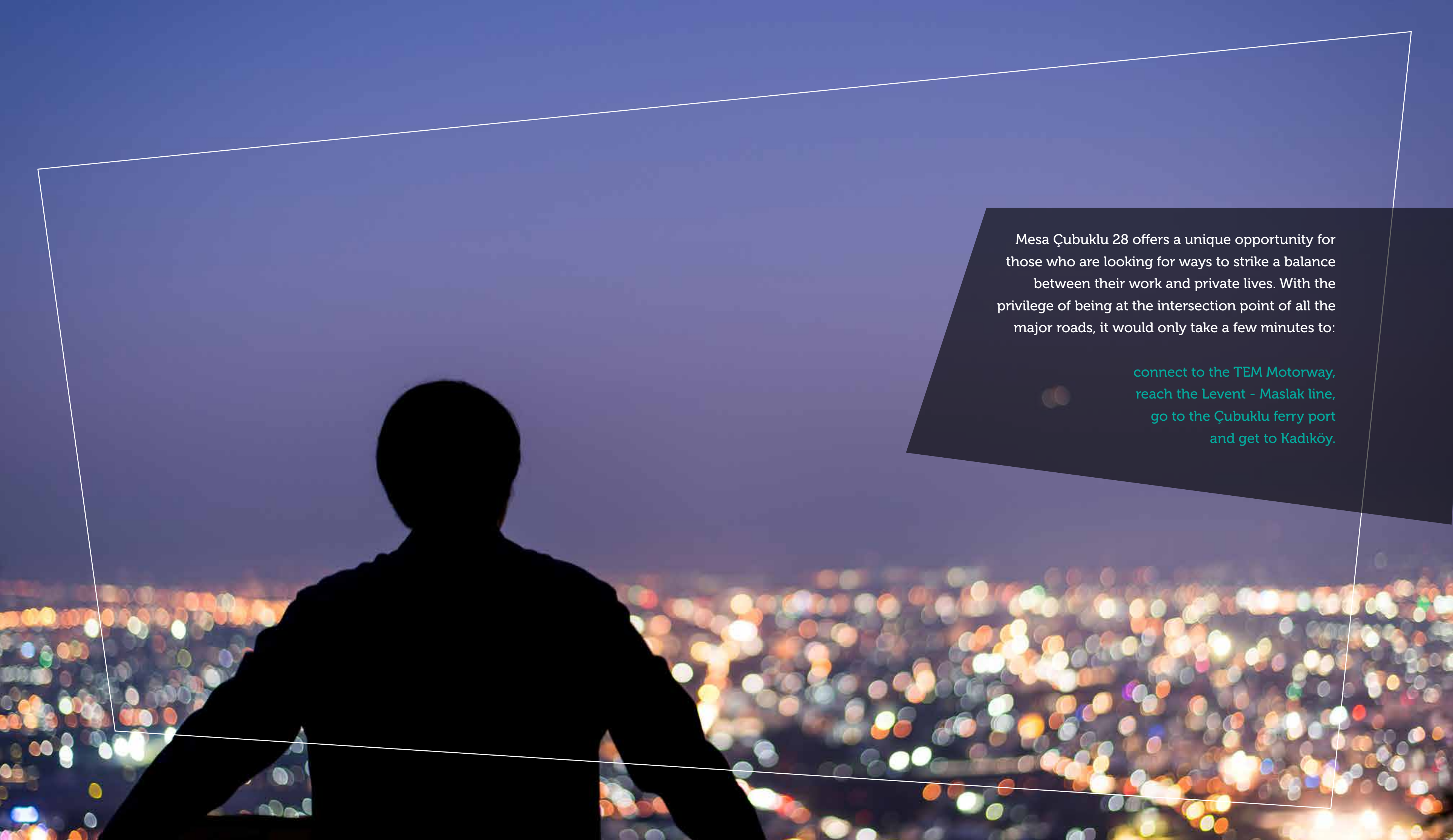
With its unique position, Mesa Çubuklu 28 will make you feel like there is no other place that could offer such beauty! With its location, it offers the privilege of having your fill of fresh air while overlooking one of Istanbul's most prized forests and satisfying your soul with a unique view of the Bosphorus.

A place in Mesa Çubuklu 28 will provide you with the dynamism of the European side and the tranquility of the Asian side thanks to its central location that will ease your travel time from one side of Istanbul to the other.

An aerial night photograph of a modern, multi-story apartment complex. The building features a dark facade with numerous windows, many of which are illuminated from within, creating a warm glow. The building is situated next to a busy road, with long-exposure light trails from cars visible in the foreground. In the background, a dense urban area is visible, with various other buildings and structures. The overall scene conveys a sense of a vibrant, modern city environment.

YOUR SAFE HAVEN IN THE HEART OF YOUR BUSY METROPOLITAN LIFE

As evening falls on the city after a busy working day, you can look forward to arriving home. This is when that feeling of the fast pace of life is replaced by a peaceful feeling... And the stars take their place in the sky...

A silhouette of a person stands in the foreground, looking out over a vast cityscape at night. The city lights are blurred into a bokeh of warm colors like orange, yellow, and white, contrasting with the deep blue of the twilight sky. A white geometric line frame is overlaid on the image, enclosing the text area on the right.

Mesa Çubuklu 28 offers a unique opportunity for those who are looking for ways to strike a balance between their work and private lives. With the privilege of being at the intersection point of all the major roads, it would only take a few minutes to:

connect to the TEM Motorway,
reach the Levent - Maslak line,
go to the Çubuklu ferry port
and get to Kadıköy.

YENİKÖY



PAŞABAĞCI PIER

Asya Shopping
Mall

BEYKOZ
STATE HOSPITAL

Çubuklu
29

Çubuklu Hayat
Kahve

5 km

ÇUBUKLU
FERRY PIER

Piri Reis Str.

HİDİV PAVILION

Halide Edip Adıvar Str.

KANLICA
PIER

Bağcı
Manço Str.

KANLICA

MİHRABAT
NATURAL PARK

BEYKOZ LIONS CLUB
PEACE FOREST

Hidiv Kadın Str.

Boğaziçi Str.

Orhan Veli Kanık Str.

Fatih Sultan Mehmet Str.

Yeni Riva Yolu
(The New Riva Road)

Kiremit Dere Str.

Yeni Riva Yolu
(The New Riva Road)

Cumhuriyet Str.

Yeni Riva Yolu
(The New Riva Road)

164. YIL POLICE MEMORIAL
FOREST

Fatih Sultan Mehmet Str.

MM
Migros

Beykoz Mansions

Acar Loft

EMİRGAN



FATİH SULTAN MEHMET BRIDGE

Lacivert
Rest.

Tema Culture
Center

ANADOLU HİSARI

MM
Migros

KAVACIK INTERSECTION

KAVACIK



An architectural rendering of a modern residential complex. The image shows a multi-story building with a facade of vertical wooden slats and large glass windows. A central courtyard features a paved walkway, green lawns, and a small water feature. People are depicted walking and sitting on the grounds, suggesting a vibrant community. The sky is blue with scattered clouds.

A DESIGN THAT PUSHES THE BOUNDARIES OF LUXURY

Spacious flats receiving light from all four sides, spacious balconies and an expertly designed residential area are the other features of the project that make a difference and enhance the value of your home.





FILL YOUR LEISURE TIME WITH FUN-PACKED ACTIVITIES

You will say hello to a world full of social spaces in Mesa Çubuklu 28 in the heart of the city.

You will be able to refresh both your body and soul at the Mesa Çubuklu sports center, sauna, spa, steam room and its indoor swimming pool that is filled with light.

The studio room will be waiting for you to have fun and the invitation room will be waiting for you to enjoy pleasurable moments with your loved ones.



CHILDREN ALWAYS COME FIRST FOR US

The playgrounds at Mesa Çubuklu 28 have been carefully designed to ensure that children can be comfortable and safe while playing. You will witness the healthy development of your child playing in the heart of nature.



An aerial photograph of a modern apartment complex with a distinctive facade of vertical wooden slats. The complex is situated on a hillside, with a road and parking lot in the foreground. A semi-transparent dark grey overlay covers the bottom right portion of the image, containing text about security features. The background shows a lush green hillside with other residential buildings and a road with cars.

ALL YOUR VALUABLES ARE PROTECTED

All 80 flats offer a safe environment with audio and video (colored) touchscreen intercom devices connected to your home automation system.

You will enjoy life in safety thanks to the security guards and the IP cameras that watch the complex day and night with the help of their motion sensors.

Your cars will also be safe 24/7 with the security offered in our spacious parking lot.

MESA ÇUBUKLU 28 LOTS OF OPTIONS TO CHOOSE FROM

Mesa Çubuklu 28, the product of MESA's 50 years of industry experience, promises a comfortable life to families in its finely designed apartments ranging in square meters from small to larger sizes.

1+1, 1+1 Ceiling Duplex, 2+1, 2+1 Duplex,
2+1 Ceiling Duplex, 3+1, 3+1 Ceiling Duplex,
4+1 Garden Duplex, 4+1 Ceiling Duplex















PERFECT DESIGN AND QUALITY THROUGHOUT

The premium-quality internal spaces of Mesa Çubuklu 28 stand out as a reflection of an architectural approach which focuses on aesthetics. In every corner of your living space, you will continually be feeling how privileged you are.



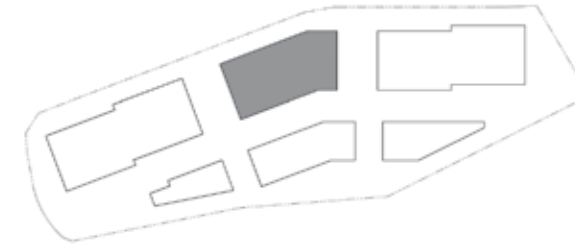


LAYOUT PLAN
&
FLOOR PLANS

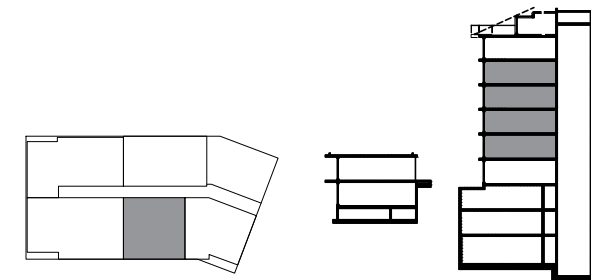


1+1 B TYPE 1A

BLOCK B



BLOCK B



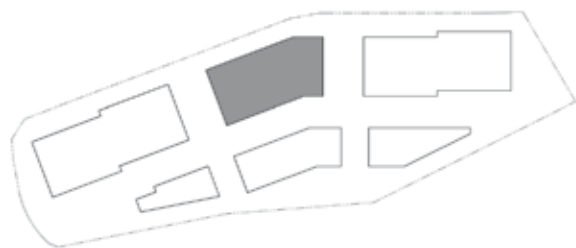
1+1 B TYPE 1A

Entrance Hall + Atelier	4,80	m ²
Living Room + Kitchen	23,82	m ²
Bedroom	15,61	m ²
Bathroom	4,52	m ²
Balcony	7,39	m ²
Net Area including Balcony	56,14	m ²
Net Area	48,75	m ²
Flat Gross Area	65,87	m ²
Gross Area	85,34	m ²
Number of Houses	4	

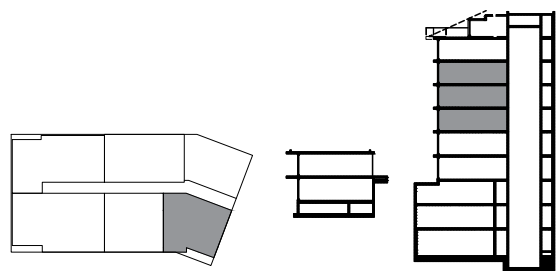


1+1 B TYPE 2A

BLOCK B



BLOCK B



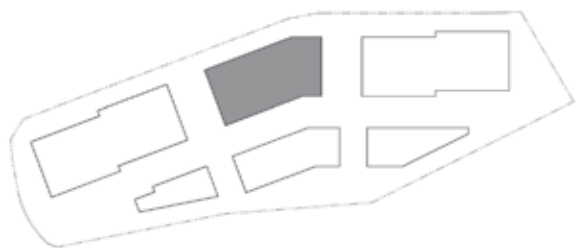
1+1 B TYPE 2A

Entrance Hall + Atelier	6,90	m²
Living Room + Kitchen	30,15	m²
Bedroom	17,60	m²
Bathroom	4,12	m²
Balcony	12,20	m²
Net Area including Balcony	70,97	m²
Net Area	58,77	m²
Flat Gross Area	82,26	m²
Gross Area	106,57	m²
Number of Houses	3	

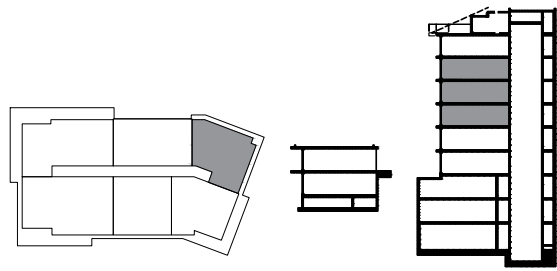


1+1 B TYPE 3

BLOCK B



BLOCK B



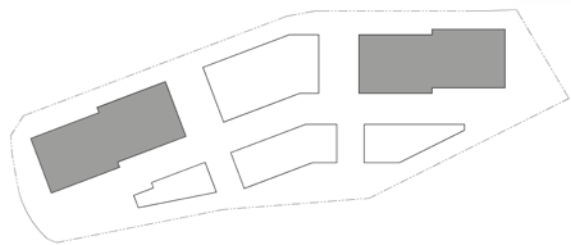
1+1 B TYPE 3

Entrance Hall	3,05	m²
Living Room + Kitchen	27,72	m²
Bedroom	14,50	m²
Bathroom	4,64	m²
Balcony	12,84	m²
Net Area including Balcony	62,75	m²
Net Area	49,91	m²
Flat Gross Area	73,39	m²
Gross Area	95,08	m²
Number of Houses	3	

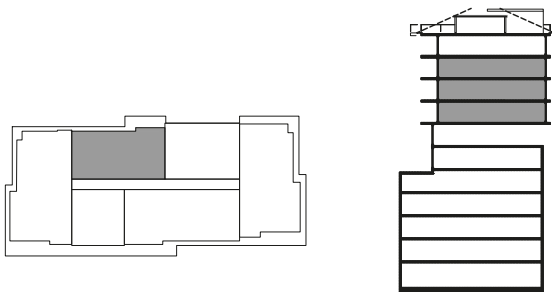


2+1 A-C TYPE 1A

BLOCK A-C



BLOCK A-C



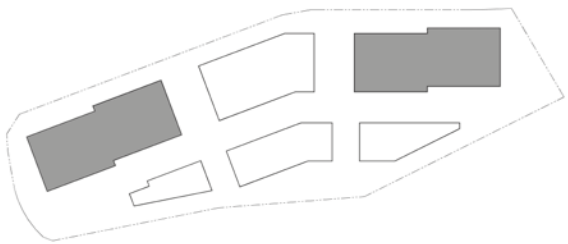
2+1 A-C TYPE 1A

Entrance Hall	3,98	m²
Corridor	4,55	m²
Living Room	27,00	m²
Kitchen	8,00	m²
Master Bedroom	17,58	m²
Ensuite Bathroom	3,55	m²
Bedroom	11,29	m²
Bathroom	4,28	m²
Balcony	6,08	m²
Net Area including Balcony	86,31	m²
Net Area	80,23	m²
Flat Gross Area	100,87	m²
Gross Area	130,68	m²
Number of Houses	6	

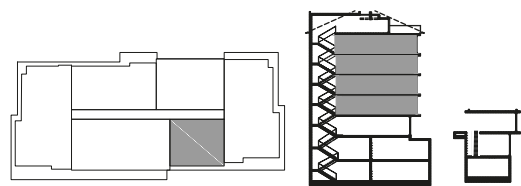


2+1 A-C TYPE 4
DUPLEX

BLOCK A-C



BLOCK A-C



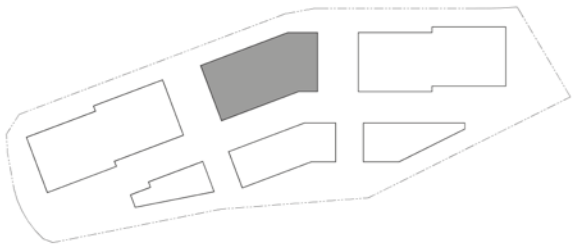
2+1 A-C TYPE 4 DUPLEX

Entrance Hall	4,66	m²
Kitchen	8,77	m²
Living Room	30,36	m²
WC	1,87	m²
Corridor	3,05	m²
Master Bedroom	16,07	m²
Bedroom	12,29	m²
Ensuite Bathroom	3,92	m²
Atelier	2,23	m²
Bathroom	3,47	m²
Staircase	3,65	m²
Balcony	3,50	m²
Balcony	3,28	m²
Net Area including Balcony	97,12	m²
Net Area	90,34	m²
Flat Gross Area	118,40	m²
Gross Area	153,39	m²
Number of Houses	4	

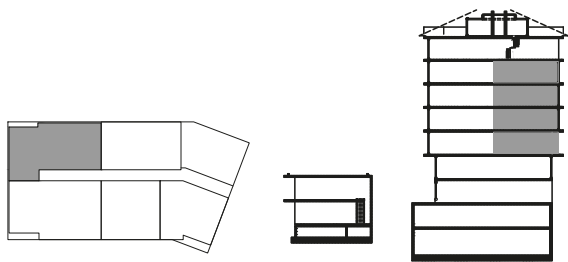


2+1 B TYPE 2

BLOCK B



BLOCK B



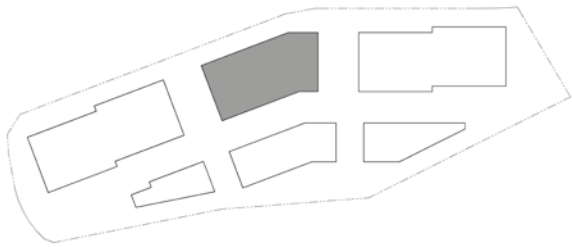
2+1 B TYPE 2

Entrance Hall	3,86	m²
Corridor	5,10	m²
Kitchen	9,15	m²
Living Room	34,10	m²
Ensuite Bathroom	3,46	m²
Master Bedroom	18,35	m²
Bedroom	10,78	m²
Bathroom	4,27	m²
Balcony	18,42	m²
Net Area including Balcony	107,49	m²
Net Area	89,07	m²
Flat Gross Area	123,70	m²
Gross Area	160,26	m²
Number of Houses	4	

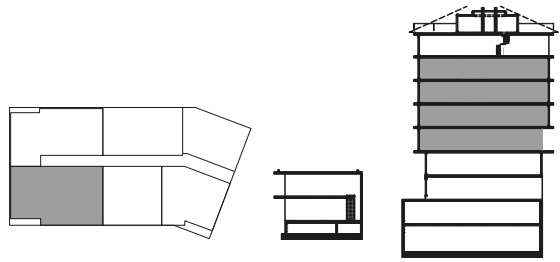


2+1 B TYPE 3A

BLOCK B



BLOCK B



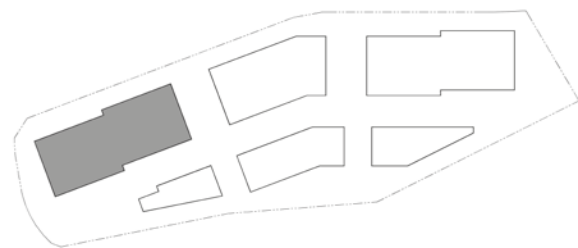
2+1 B TYPE 3A

Entrance Hall	3,71	m²
Corridor	5,64	m²
Living Room	26,37	m²
Kitchen	11,70	m²
Master Bedroom	18,82	m²
Ensuite Bathroom	3,84	m²
Bedroom	15,00	m²
Bathroom	4,45	m²
Atelier	1,73	m²
Balcony	17,91	m²
Net Area including Balcony	109,17	m²
Net Area	91,26	m²
Flat Gross Area	126,38	m²
Gross Area	163,73	m²
Number of Houses	4	

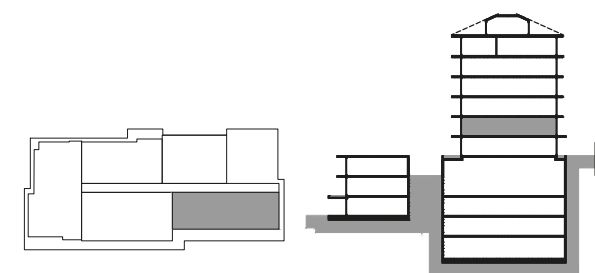


2+1 C TYPE 5B

BLOCK C



BLOCK C



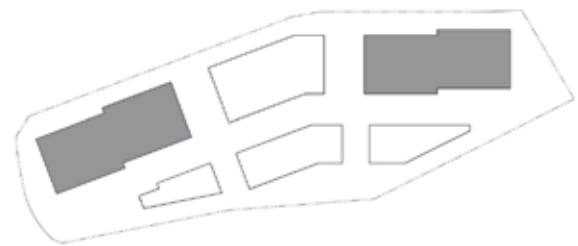
2+1 C TYPE 5B

Entrance Hall	4,03	m²
Living Room	25,11	m²
Kitchen	9,34	m²
Corridor	6,94	m²
Master Bedroom	17,37	m²
Ensuite Bathroom	3,25	m²
Bedroom	10,61	m²
Bathroom	3,76	m²
Atelier	1,93	m²
Net Area	82,34	m²
Flat Gross Area	100,10	m²
Gross Area	129,68	m²
Number of Houses	1	

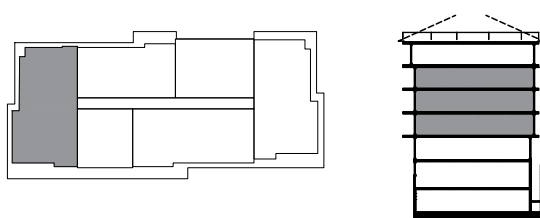


3+1 A-C TYPE 1A

BLOCK A-C



BLOCK A-C



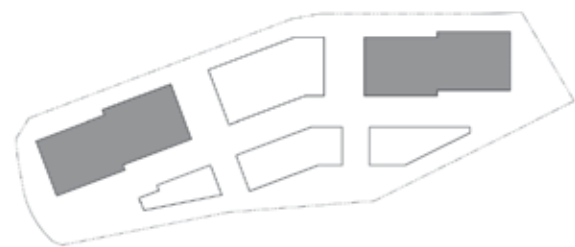
3+1 A-C TYPE 1A

Entrance Hall	9,62	m²
Living Room	39,03	m²
Kitchen	16,92	m²
Corridor	3,01	m²
Master Bedroom	18,72	m²
Ensuite Bathroom	3,47	m²
Bedroom	11,72	m²
Bedroom	11,94	m²
Bathroom	4,13	m²
Balcony	29,96	m²
Net Area including Balcony	148,52	m²
Net Area	118,56	m²
Flat Gross Area	167,44	m²
Gross Area	216,92	m²
Number of Houses	6	

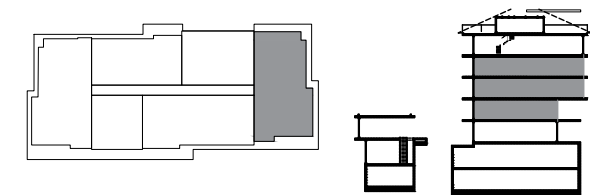


3+1 A-C TYPE 2A

BLOCK A-C



BLOCK A-C



3+1 A-C TYPE 2A

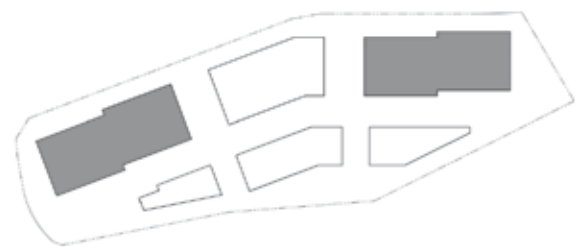
Entrance Hall	4,51	m²
Living Room	40,33	m²
Kitchen	12,87	m²
Corridor	7,24	m²
Master Bedroom	19,04	m²
Ensuite Bathroom	3,47	m²
Bedroom	11,21	m²
Bedroom	10,54	m²
Bathroom	4,25	m²
Atelier	2,15	m²
Balcony	30,75	m²
Net Area including Balcony	146,36	m²
Net Area	115,61	m²
Flat Gross Area	167,44	m²
Gross Area	216,92	m²

Number of Houses 5

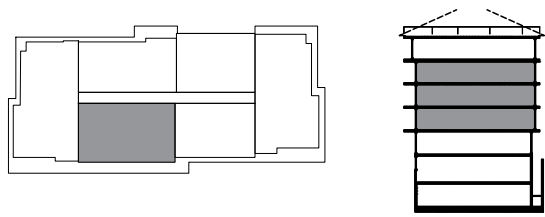


3+1 A-C TYPE 3A

BLOCK A-C



BLOCK A-C



3+1 A-C TYPE 3A

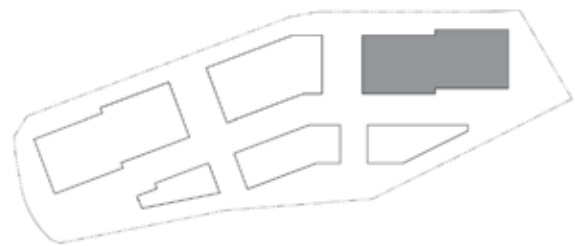
Entrance Hall	4,47	m²
Living Room	34,62	m²
Kitchen	10,07	m²
Corridor	7,33	m²
Master Bedroom	19,42	m²
Ensuite Bathroom	4,20	m²
Bedroom	11,01	m²
Bedroom	11,04	m²
Bathroom	5,00	m²
Atelier	2,19	m²
Balcony	17,23	m²
Net Area including Balcony	126,58	m²
Net Area	109,35	m²
Flat Gross Area	146,15	m²
Gross Area	189,34	m²

Number of Houses 6

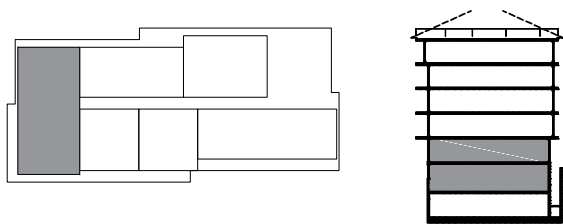


4+1 A TYPE 1
MID FLOOR DUPLEX GROUND FLOOR

BLOCK A



BLOCK A



4+1 A TYPE 1 MID FLOOR DUPLEX

Net Area	190,47	m²
Flat Gross Area	256,00	m²
Gross Area	331,65	m²
Number of Houses	1	



4+1 A TYPE 1 MID FLOOR DUPLEX GROUND FLOOR

Entrance Hall	7,55	m²
Living Room	50,50	m²
Kitchen	15,03	m²
Ensuite Bathroom	5,23	m²
Bathroom	3,25	m²
Master Bedroom	24,23	m²
Corridor	3,83	m²
Balcony	35,62	m²

4+1 A TYPE 1
MID FLOOR DUPLEX TOP FLOOR

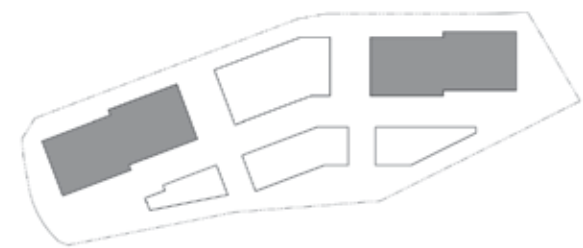


4+1 A TYPE 1 MID FLOOR DUPLEX TOP FLOOR

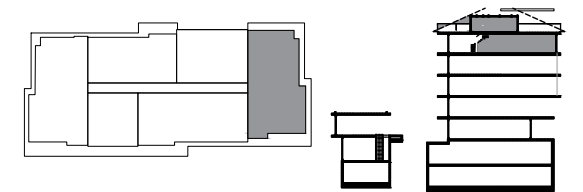
Entrance Hall	6,71	m²
Ensuite Bathroom	5,23	m²
Bathroom	4,13	m²
Bedroom	13,31	m²
Bedroom	15,04	m²
Master Bedroom	24,03	m²
Corridor	7,73	m²
Staircase	4,67	m²
Balcony	28,26	m²

4+1 A-C TYPE 3
CEILING DUPLEX

BLOCK A-C

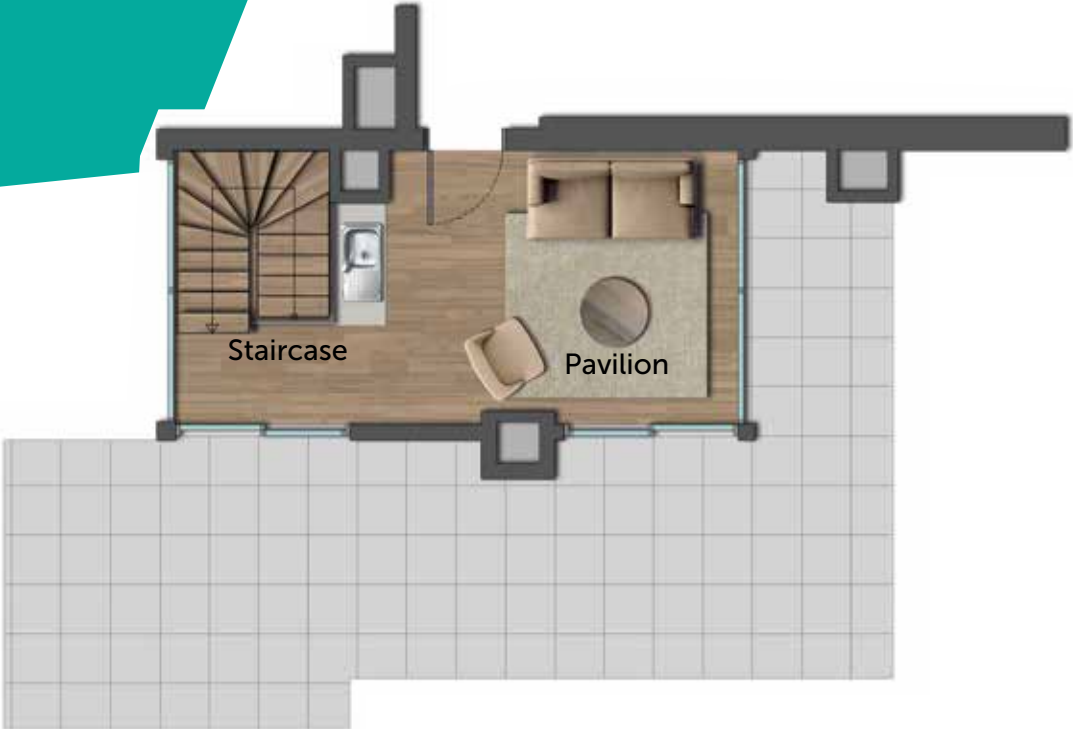


BLOCK A-C



4+1 A-C TYPE 3 CEILING DUPLEX

Net Area including Balcony	165,57	m²
Net Area	134,82	m²
Flat Gross Area	194,67	m²
Gross Area	252,20	m²
Number of Houses	2	



4+1 A-C TYPE 3 CEILING DUPLEX TOP FLOOR

Pavilion	18,00	m²
Staircase	3,96	m²



4+1 A-C TYPE 3 CEILING DUPLEX GROUND FLOOR

Entrance Hall	4,39	m²
Living Room	38,35	m²
Kitchen	12,43	m²
Ensuite Bathroom	3,47	m²
Bedroom	11,21	m²
Bedroom	10,54	m²
Master Bedroom	19,04	m²
Corridor	7,03	m²
Bathroom	4,25	m²
Atelier	2,15	m²
Balcony	30,75	m²



444 9 366
mesacubuklu28.com

